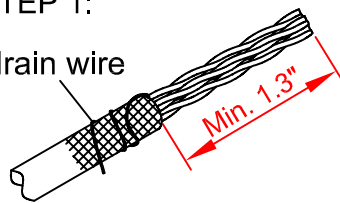


# INSTRUCTION SHEET

## STEP 1:

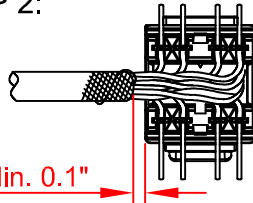
drain wire



Strip at least 1.3 inches of the jacket off the end of the cable. Pull the braid back and wrap the drain wire around the braid/cable.

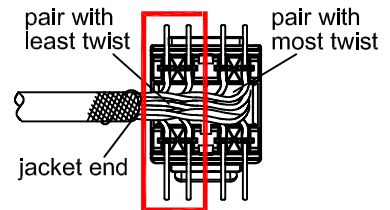
## STEP 2:

Min. 0.1"



Press the wires into the terminals until they are fixed in position. (T568A/T568B)

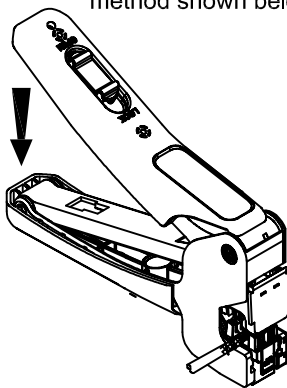
**Make sure that there is at least a 0.1" gap between the IDC and the jacket.**



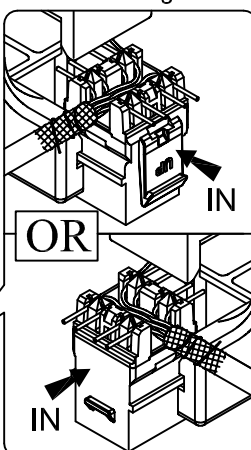
**The pair with the least twist should be inserted into the IDC closest to where the jacket ends.**

## STEP 3:

\* Alternate termination method shown below.

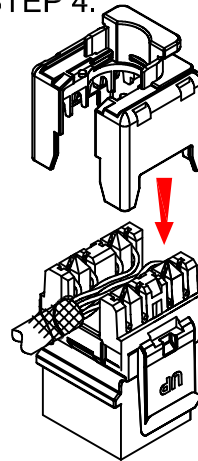


Make sure the jack is fixed into the guide.



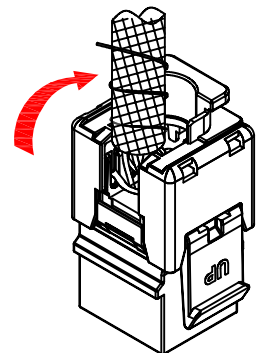
Insert the jack all the way into the guide. It can face either direction – as noted. Squeeze the handle of the tool to terminate the jack and cut off the excess wires.

## STEP 4:



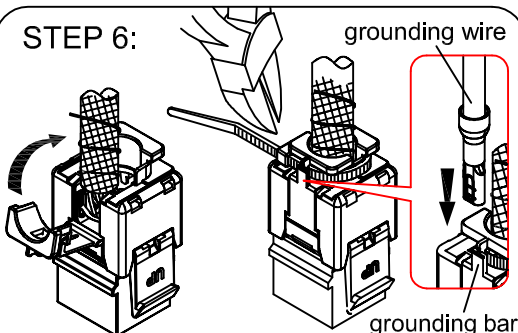
**After termination, keep the cable in the horizontal position until the cap is clipped into place.**

## STEP 5:



**Rotate the cable 90 degrees and into position, as shown.**

## STEP 6:



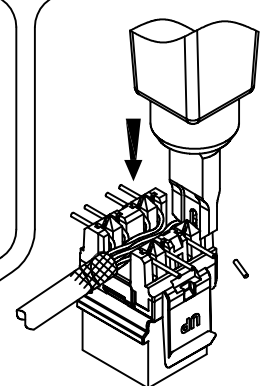
**Step 6-1:**  
Put the hinged side cover into the slot. Snap the side cover to the jack.

**Step 6-2:**  
Attach the cable tie to the shielding lug. Insert the grounding wire into the grounding bar.

## UNLOAD:

**Step 1:**  
Cut the cable tie. Insert a small slotted screw driver into the cable opening and pry to remove the side cover.

**Step 2:**  
Insert the screw driver into the gap and pry to remove the shielding cap.



**Alternate Termination:**  
Terminate the wires with a punch down tool. Make sure the tool cuts off the excess wires.